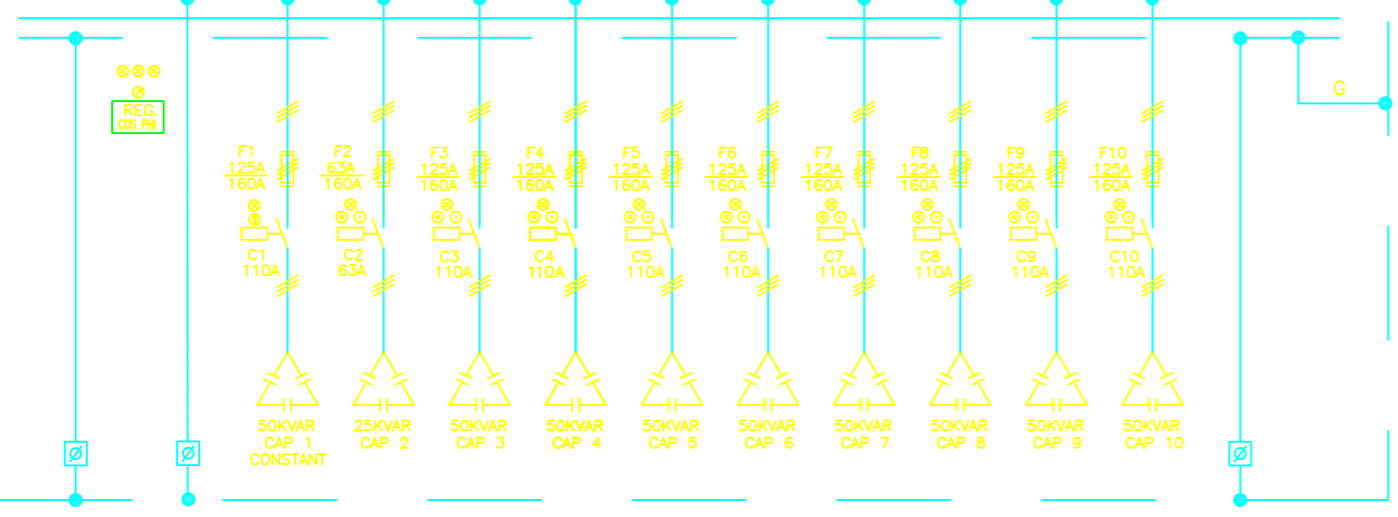


ISSUES			
REV	DATE	COPY	ISSUED TO
99.12.13	S.C.		KERMAN BAREZ TIRE CO.
1400.10.14	1		KERMAN BAREZ TIRE CO.

CBX-62

3PH+N+E, 400/230V, 50Hz, 1500A, CU PAINTED AT 40°C, 25KA

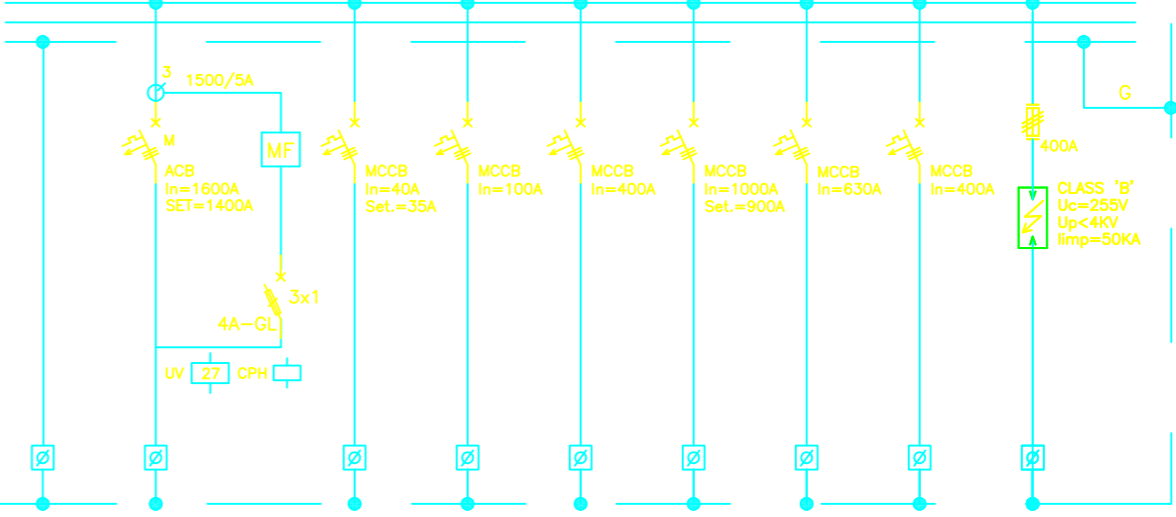


IN	RST
TO EARTHING SYSTEM 1x240mm ² NYA-Y/G	
FROM PX-MELVDP 475KVAR 6(1X240mm ²)NYY OR 6(1X400mm ²)NAY	

IN	RST
TO EARTHING SYSTEM 1x240mm ² NYA-Y/G	

PX-MELVDP(PRE BUILDING EXTENSION'S MAIN EMERGENCY LOW VOLTAGE DIST PANEL)

3PH+N+PE, 400/230V, 50Hz, 2400A, CU PAINTED @ 40°C, I_{sc}=25KA

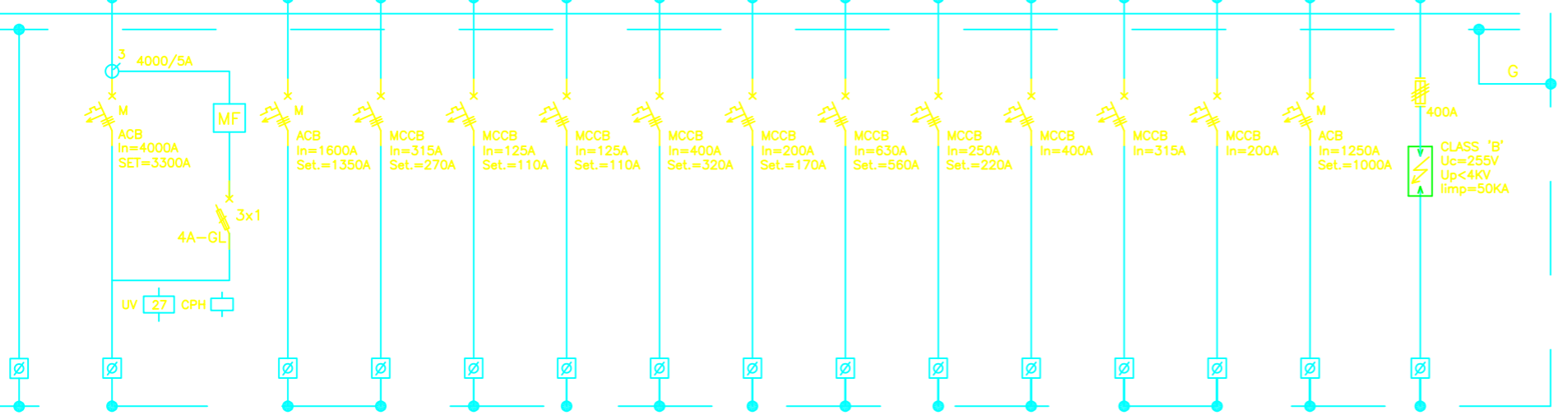


IN	RST
TO EARTHING SYSTEM 1x240mm ² NYA-Y/G	
FROM EMERGENCY TRANS. 1000KVA 14(1X240mm ²)NYY OR 14(1X400mm ²)NAY	

PDP	RST	PLX	RST	PX	RST	BAX	RST	SP1	RST	SP2	RST
TO PRE BLG. SUB ST. DIST. PANEL PX-EDP62 12KW, 3PH SEE APPROPRIATE DWG.		TO LIGHTING DIST. PANEL OF PRE BLG. EXTENSION(40KW) (3x25/16+1x16mm ²)NYY OR (3x50/25+1x25mm ²)NAY L=70m		TO APEX EXTRUDER 225KW 3(1x240)+2(1x120) NYY OR 3(1x400)+2(1x240) NAY L=70		TO BANBURY BLDG. EMERGENCY LOAD DIST. PANEL BAX-ELVDP 300KW, 3PH SEE APPROPRIATE DWG.		SPARE		SPARE	

PX-MLVDP(PRE BUILDING EXTENSION'S MAIN LOW VOLTAGE DIST PANEL)

3PH+N+PE, 400/230V, 50Hz, 6000A, CU PAINTED @ 40°C, I_{sc}=25KA



IN	RST
TO EARTHING SYSTEM 1x240mm ² NYA-Y/G	
FROM NORMAL TRANS. 2000KVA 25(1X240mm ²)NYY OR 25(1X400mm ²)NAY	

PM1	RST	PM2	RST	PM3	RST	PM4	RST	PMS	RST	MAP	RST	PSE	RST	MSP	RST	SP2	RST	SP3	RST	SP4	RST	CB	RST
TO INNER LINER 721KW, 3PH 11(1X240mm ²)NYY OR 11(1X400mm ²)NAY L=50m		TO BEAD WINDING 140KW, 3PH 3(1X150)+2(1X70)NYY OR 3(1X240)+2(1X120)NAY L=110m		TO APEX APLAYER 1 3x35/16+1x16mm ² NYY OR 3x70/35+1x35mm ² NAY L=140m		TO APEX APLAYER 2 55.5KW, 3PH 3x35/16+1x16mm ² NYY OR 3x70/35+1x35mm ² NAY L=145m		TO SMALL COMPOUND 166KW, 3PH 3(1x150)+2(1x70)mm ² NYY OR 3(1X240)+2(1X120mm ²) NAY L=100m		TO MAIN AIR WASHER DIST. PANEL, 80KW, 3PH 3x95/50mm ² NYY OR 3(1X120)+2(1X70) NAY L=145m		TO PUMP ST. EXTENSION PSX-MDP 225KW SEE APPROPRIATE DWG.(BLG. 73)		TO MECH. & SOCKET BOX DIST. PANEL, 100KW, 3PH 3x95/50mm ² NYY OR 3(1X120)+2(1X70) NAY L=70m		SPARE		SPARE		SPARE		TO CAPACITOR BANK DIST. PANEL, 475KVAR 6(1X240mm ²)NYY OR 6(1X400mm ²)NAY	

NOTES

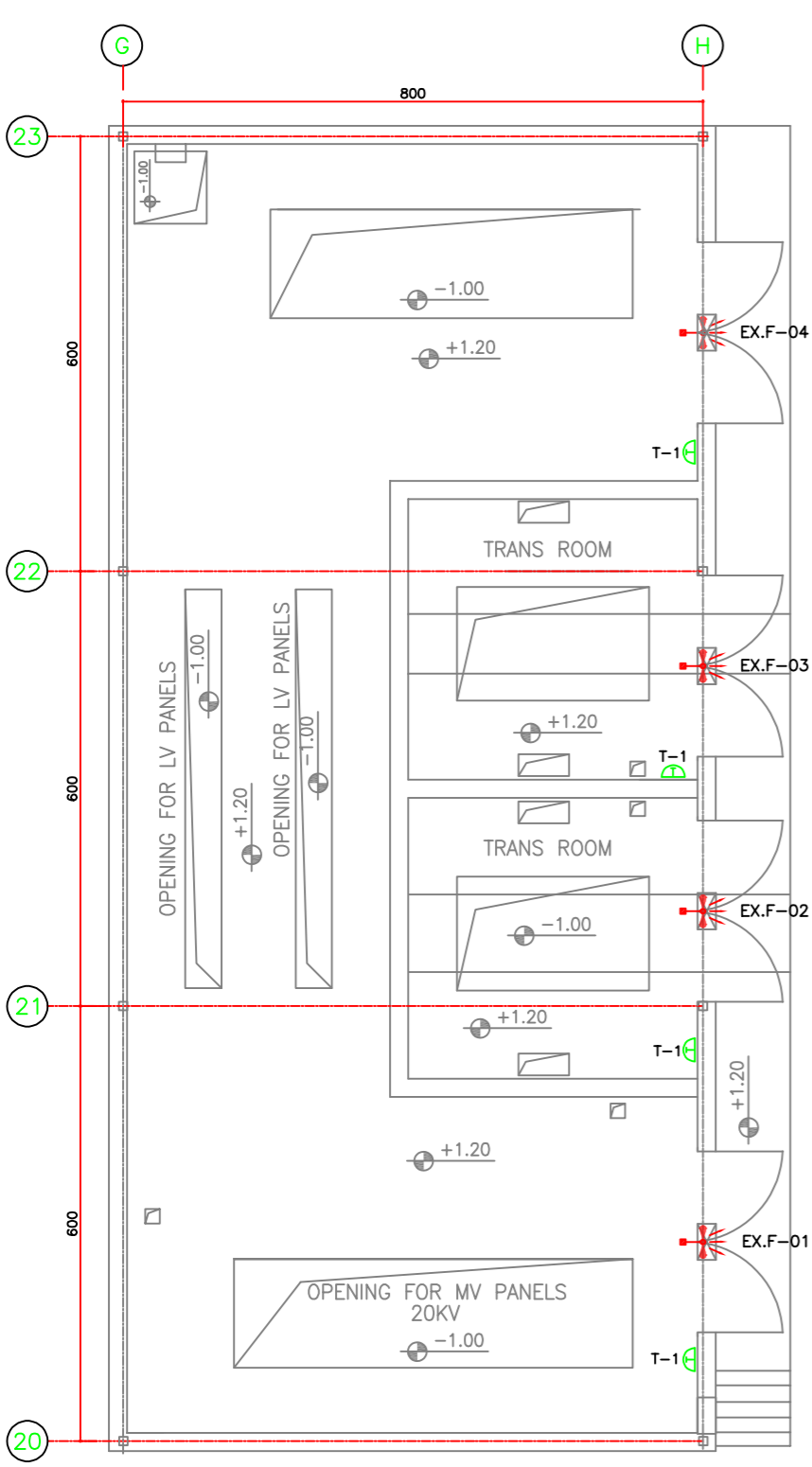
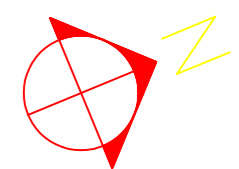
- 1- DRY TYPE CAPACITOR SHOULD BE USED
- 2- CONTACTOR SHOULD BE SUITABLE FOR CAPACITOR
- 3- PANELS SPEC. ARE :
 - IP42
 - RAL 7035
 - INPUT & OUTPUT FROM BOTTOM
 - FREE STANDING PANEL
- 4- (*) LOADS SHOULD BE FINALIZED BY CLIENT
- 5- (M) STAND FOR MOTOR OPERATED
- 6- MULTI FUNCTION METER(MF) MUST HAS ONE OF RS232 OR RS485 PORT

FOR CONSTRUCTION

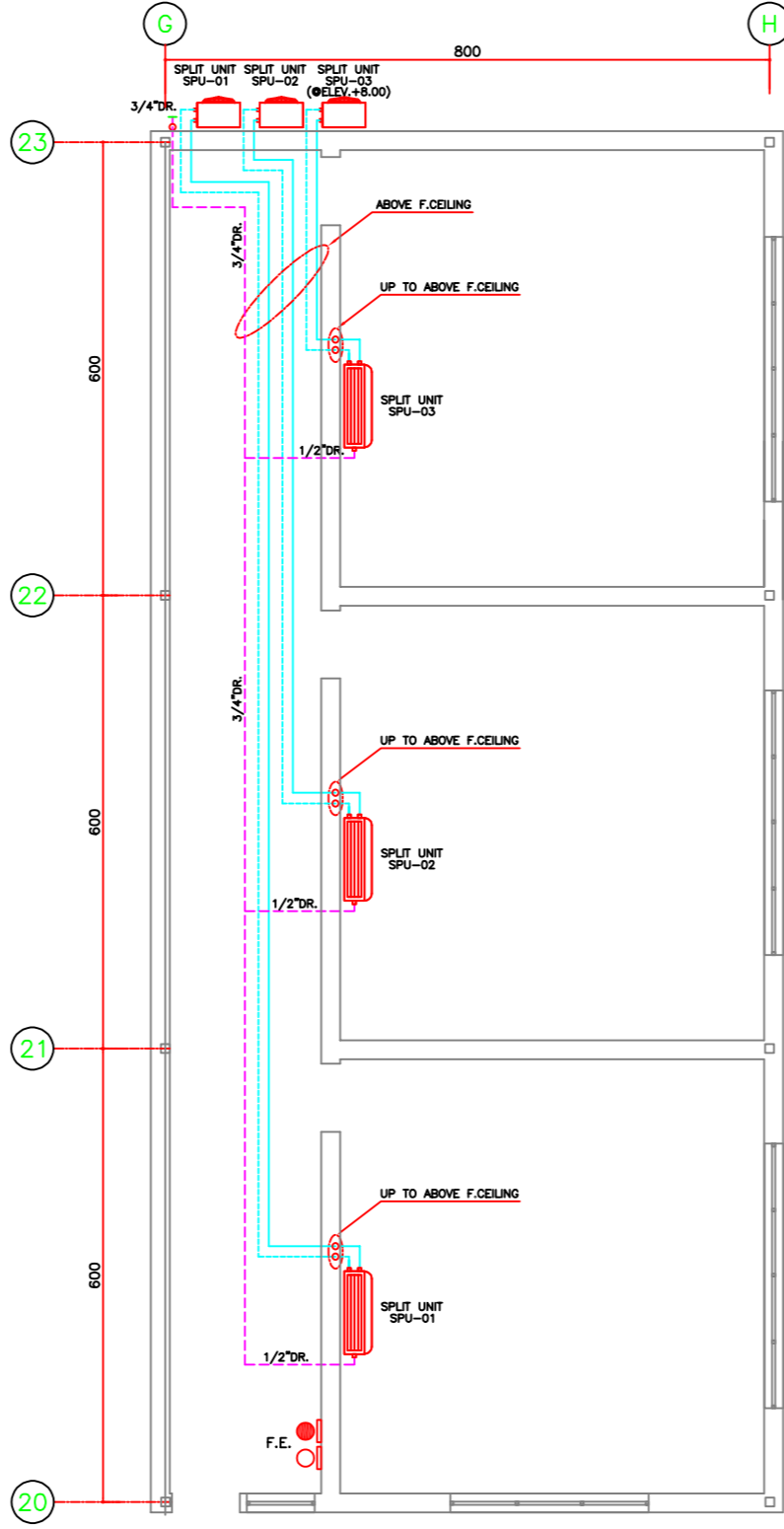
REV. NO.	OF Δ	DATE	DESCRIPTION	P.A.	M.M.	S.J.
1400.10.14			FOR CONSTRUCTION			
KERMAN BAREZ TIRE CO.			RADIAL TIRE MANUFACTURING PLANT-(EXTENSION)			
TIRE PRE FABRICATING						
SCALE		PROJECT NUMBER		9862		
DRAWN M.M.		LOW VOLTAGE MAIN DISTRIBUTION PANELS		DRAWING NUMBER REV.		
CHECKED M.M.		OF SUB STATION EXTENSION		1.623309 a		
APPROVED S.J.		PX-MELVDP,PX-MLVDP,CBX-62,		DATE		
DATE		99.12.13		CLIENT'S DRAWING NUMBER		
CAD FILE		62623309				

This document contains proprietary information, and except with written permission of "Andishevvarzan Sanat JAM" Consulting Engineers, such information shall not be published, or disclosed to others, or used for any purpose and documents shall not be duplicated in whole or in part.

ISSUES				
REV	DATE	COPY	ISSUED TO	
1400.01.18	S.C		KERMAN BAREZ TIRE CO.	
1400.10.14	1		KERMAN BAREZ TIRE CO.	



TRANSFORMER ROOM EXHAUST AIR SYSTEM
SCALE 1:150



OFFICE AREA HVAC SYSTEM
SCALE 1:50

- LEGENDS :**
- SPLIT UNIT AIR CONDITIONER (INDOOR UNIT)
 - SPLIT UNIT AIR CONDITIONER (OUTDOOR UNIT)
 - F.E. 6Kg CO2 FIRE EXTINGUISHER
 - F.E. 6Kg DRY POWDER FIRE EXTINGUISHER
 - T-1 ROOM THERMOSTAT (ON/OFF TYPE,0~50°C)

FOR CONSTRUCTION

SPLIT UNIT TYPE AIR CONDITIONER SCHEDULE

DESIGNATION	QTY	COOLING CAP. (BTU/HR)	HEATING CAP. (BTU/HR)	ELECTRICAL DATA			DIMENSION HxLxW (mm)		NET WEIGHT(KG)		MAX. PIPING LENGTH (m)	OUTDOOR TEMP. (°C)	+UNIT SELECTION	
				POWER KW	V - Ø - HZ	INDOOR UNIT	OUTDOOR UNIT	INDOOR UNIT	OUTDOOR UNIT	MANUFACTURER			MODEL OR TYPE	
SPU-01~03	3	18000	18000	1.65	220-1-50	320x998x238	620x790x298	14.00	40.00	25	-15~45	OGENERAL	ASGS18LFCA	

+ UNITS SHALL BE SIMILAR TO THE SPECIFIED MANUFACTURER PRODUCT CORRESPONDING MODEL OR APPROVED EQUAL.

EXHAUST FAN SCHEDULE

EX. FAN No.	TYPE	QTY.	SERVICE AREA	FLOW RATE CFM	ST. PR. in wg	ELECTRICAL DATA				FAN D. mm	+UNIT SELECTION		
						KW	V.	PH	HZ		RPM	MANUF.	MODEL
E.F.-01~04	WALL MOUNTED	4	TRANSFORMER ROOM	882	0.10	0.12	220	1	50	900	350	IRAN HAVASAZAN	HRK-350

+ UNITS SHALL BE SIMILAR TO THE SPECIFIED MANUFACTURER PRODUCT CORRESPONDING MODEL OR APPROVED EQUAL.

REV.	NO. OF Δ	DATE	REVISION	DRAWN	CHE'D	APP'D

JAM
Consulting Engineers

KERMAN BAREZ TIRE CO.
RADIAL TIRE MANUFACTURING PLANT-KERMAN(EXTENSION)
TIRE PRE FABRICATING(SUBSTATION)

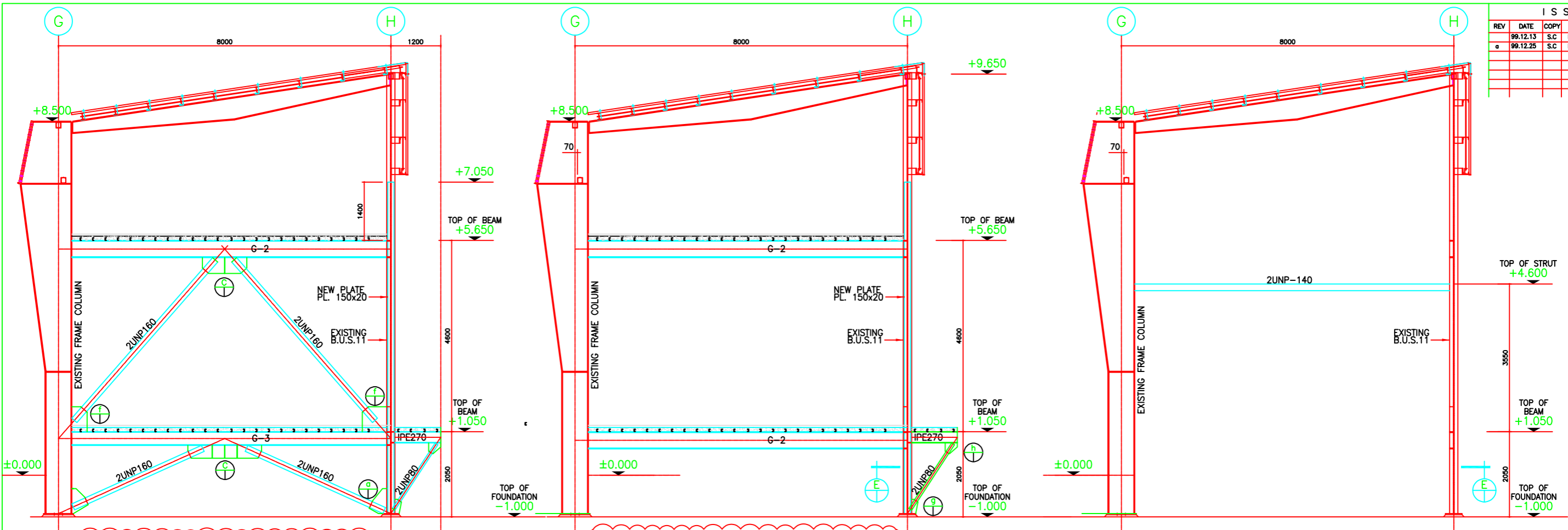
PROJECT NUMBER **9862**
DRAWING NUMBER REV. **1.623401**

SCALE	F.A.	PROJECT NUMBER	9862
CHECKED	B.A.	DRAWING NUMBER	REV.
APPROVED	S.J.	DRAWING NUMBER	1.623401
DATE	1400.01.18	CLIENT'S DRAWING NUMBER	
CAD FILE	62623401		

shall not be published, or disclosed to others, or used for any purpose and documents shall not be duplicated in whole or in part.

This document contains proprietary information, and except with written permission of "Andishehvarzan Sanat JAM" Consulting Engineers, such information shall not be published, or disclosed to others, or used for any purpose and documents shall not be duplicated in whole or in part.

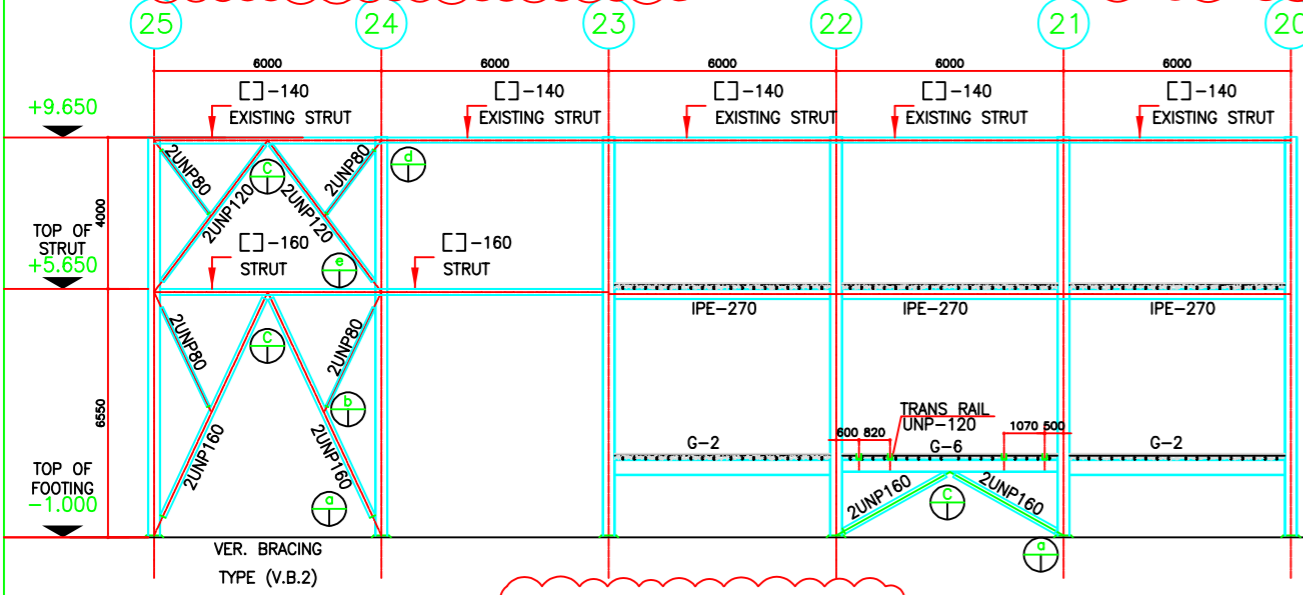
ISSUES				
REV	DATE	COPY	ISSUED TO	
99.12.13	S.C		KERMAN BAREZ TIRE CO.	
99.12.25	S.C		KERMAN BAREZ TIRE CO.	



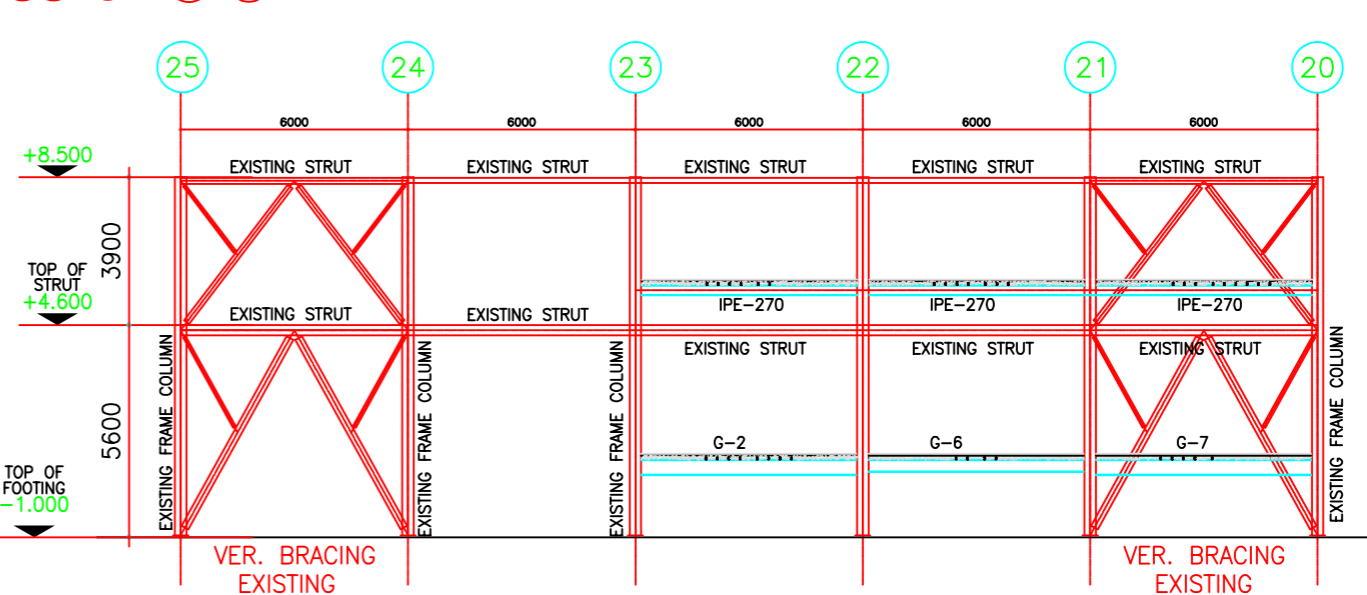
FRAMING AT ROWS "20" & "23" 1:50

FRAMING AT ROWS "21" & "22" 1:50

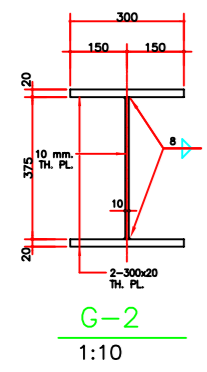
FRAMING AT ROWS "24" & "25" 1:50



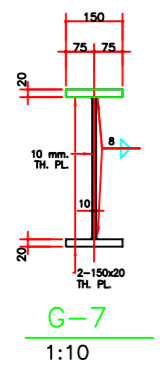
FRAMING AT ROWS "H" 1:100



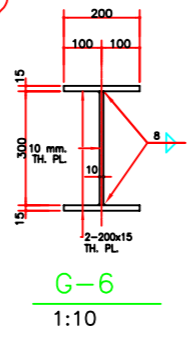
FRAMING AT ROWS "G" 1:100



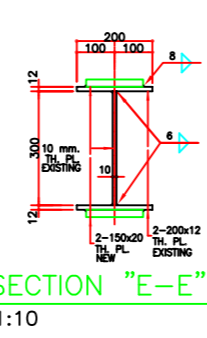
G-2 1:10



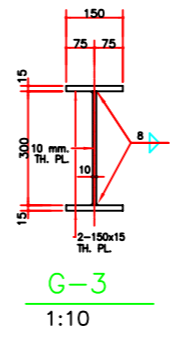
G-7 1:10



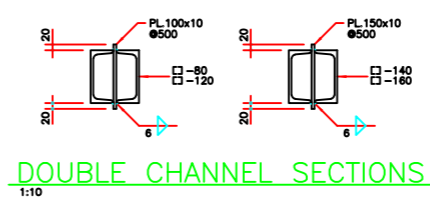
G-6 1:10



SECTION "E-E" 1:10



G-3 1:10



DOUBLE CHANNEL SECTIONS 1:10

REV. NO. OF Δ	DATE	REVISION	DRAWN	P.A.	CHE'D	APP'D	S.J.
99.12.25		PLATFORM DETAILS ARE ADDED					

KERMAN BAREZ TIRE CO.		PROJECT NUMBER 9862	
RADIAL TIRE MANUFACTURING PLANT-KERMAN		DRAWING NUMBER REV. 1.622311 a	
TIRE PRE-BUILDING(SUBSTATION)		STEEL STRUCTURE	
Andishehvarzan Sanat CONSULTING ENGINEERS		CLIENT'S DRAWING NUMBER	